



Inter Parish Ministry

ANNUAL REPORT

April 1, 2014—March 31, 2015

2014 marked IPM's 50th year of providing food, clothing and other communal support to those in need in eastern Hamilton County and all of Clermont County and to empower clients with information, support and services to improve their lives.



New faces of hunger look back at us everyday. 25% of our pantry visitors are there for the first time. Underemployed with part-time jobs, unemployed or retired with limited funds, they struggle to feed their families. Others have come back after a year or more due to cuts in SNAP benefits, high cost of food and reduced work hours. More families are coming to Inter Parish Ministry Choice Food and Clothing Pantries daily, during our Monday evening hours in Newtown and on Saturday in Batavia. 1 in 3 Ohioans is food insecure and it is particularly difficult for the children. We have seen double digit growth in our **Mobile Pantry program** that distributes 5000 pounds of food to 150 families at scheduled locations throughout our service area in Clermont and eastern Hamilton Counties twice monthly. Whether you donated a can or a carload, it mattered and we are grateful that you helped put smiles on so many precious faces of the hungry.

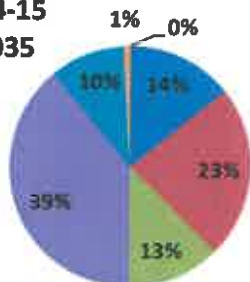
2014 HIGHLIGHTS

Choice Food & Clothing Pantries served in Newtown & Batavia.....4574 Families & 14,988 Individuals (+3%)
 Mobile Pantries served.....2,204 Families (+27%) & 6,663 Individuals (+18%)
 First Time Pantry Visitors..... 25% of Total
 Back to School program of backpacks, school supplies & shoe gift cards served.....239 Children
 Adopt a Family Program of Christmas gifts, turkey & food gift cards served...1,438 Individuals in 355 Families
 Toy Store program for clients to purchase Christmas gifts for their children served.....140 Children
 New! Music with a Mission Concert benefiting Choice Food Pantries raised.....\$7,300
 Volunteer Hours logged by dedicated IPM Volunteers..... 13,200 Hours

CLERMONT COUNTY & EASTERN HAMILTON COUNTY, OH, OUR SERVICE AREA

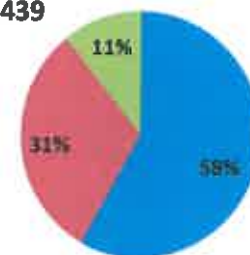
Inter Parish Ministry does not receive city, state or federal grant dollars. We are grateful to the hundreds of generous local individuals, corporations, foundations and schools that make it possible for us to provide food, clothing and other assistance to "food insecure" families that increasingly must make the choice to pay the rent, a medical or electric bill or buy food. Thank you for having a heart for the hungry in our community.

Support
 FY 2014-15
 \$710,035



- Churches
- Individuals and Organizations
- Foundations and Trusts
- Emergency Assistance (cash and noncash)
- Special Events
- Donated Services
- Investment Income

Expenses
 FY 2014-15
 \$636,439



- Programs
- Administrative
- Fund Raising

THANK YOU!

We are blessed by all who

support our mission. We cannot list every contribution, but please know how grateful we are to each of you! See just a few of the many efforts that

make a difference in people's lives through IPM programs.

Run/Walks



School Food Drives

Forest Hills "ALL IN"; West Clermont "Fill the Bus" & more



Youth & Adult Food Drives



Church & Corporate Sponsored Food Drives

For example:
Newtown UMC Lent Drive; Anderson Hills UMC Project 5000; PNC



IPM provides **Emergency Financial Assistance** to low income individuals and families through direct referrals from Clermont and Hamilton County social service agencies. We also help by connecting our clients through the [Clermont County Safety Net Alliance](#) and other partner agencies to locate services and assistance for those in need.



In 2014, IPM successfully partnered with The Ohio State University Extension Clermont County to sponsor 20 IPM families in a pilot **Nutrition Education Class** called USDA Nutritional Education Series "My Plate." Designed to teach the benefits of healthy eating, the program has been expanded.

Our **Seasonal Programs**, which include Run/Walks, Back to School, Hunger Action Month, Toy Store, Adopt a Family, serve hundreds of our IPM families each year which ensure our clients have the basic tools and hope they need to provide for their families.

Music with a Mission was brought back from years past as the final celebration event of IPM's 50 years of service. 5 choirs lifted voices in a friendly "sing off" to raise funds for IPM. By popular demand, the next concert is scheduled for October 18, 2015.

IPM volunteers for weekly **Elder Care** visits and planned activities, including bingo, ice cream social and holiday party with gifts at a local nursing home and support **Community Dinners** on the 4th Monday of each month (holidays excepted) at the Lutheran Church of the Resurrection.

Mobile Pantries deliver 5,000 pounds of food to 150 families in about two hours. Assisted by volunteers from churches, businesses and organizations, each family receives a week's worth of food. In 2014, our 19 mobiles served 2204 households.

THANK YOU to the following businesses for supporting IPM throughout the year

Pantry Partner Benefactors	Pantry Partner Supporters
<ul style="list-style-type: none"> • Dawn Management • Park National Bank • The Dan Varner Band • Beacon Orthopedics and Sports Medicine • Everything But The House • Gardner Media Services • Washburn, Kleinfelder, Pham Wealth Management Group • Hyland Financial Services • Kamphaus, Henning and Hood • Kroger 	<ul style="list-style-type: none"> • The Lykins Company • The Motz Group • National Bank and Trust • Peoples Bank • PNC Bank • Savor Seasonings • TSC Apparel • ZimCom

Ways You Can Help

Hold a food or clothing drive, donate canned and fresh food, personal care items, gently worn clothing and support our seasonal programs with school supplies, holiday gifts and gift cards throughout the year.

For all the latest news visit us at [www.interparish.org](#) and sign up for our monthly newsletter or visit us on [Facebook](#), [Linked In](#), [Twitter](#), [Pinterest](#) and [CERKL](#).

Inter Parish Ministry
3509 Debolt Road
Newtown, OH 45244
Phone: 513.561.3932
E-mail: info@interparish.org

